



**PREMIER  
ALUMINUM**

a LIGON  company

Aluminum Castings machined and finished



Serving the medium volume niche



Castings from 1 to over 100 pounds



ISO 9001:2000 Certified

***Producer of machined complete - ready - to - assemble  
Aluminum Castings***



Premier Aluminum's staff collaborates with our customers to develop effective, efficient CASTING designs. Our "core competency" is completing this process by adding value and integrating our in-house machining skills with outside services to provide ready to assemble components.

## Aluminum Casting Methods

Premier produces permanent mold castings using four methods. This versatility can best serve each application and various casting design requirements.

- **LOW PRESSURE** – Air pressure is used to force molten metal upward into a closed die cavity. This is an excellent process for circular designs as well as pressure tight vessels. These castings approach the surface finish of die castings and create a denser part, without the higher tooling cost.
- **TILT-POUR** – Molten metal is transferred from a holding cup into the mold in a precise microprocessor controlled sequence. This method offers high quality consistent parts to the widest variety of sizes and shapes.
- **STATIC-POUR** – Molten metal is ladle-poured from the top directly into a die cavity. This method is normally used for center-feed castings and accommodates a wide range of small to large castings.
- **SEMI-PERMANENT MOLD** – Preformed sand cores are used with the methods described above. This allows casting of internal shapes, features or undercuts when "hard tooling" is not the best option.

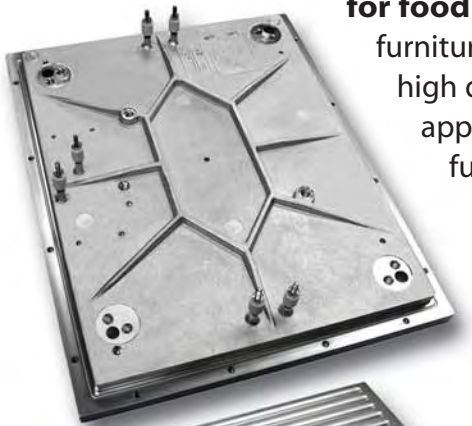
## Aluminum Alloy Selection

Premier casts the following aluminum alloys: 319, 333, 354, 355, 356, A356, 357, 360, 380, 535 and 852.

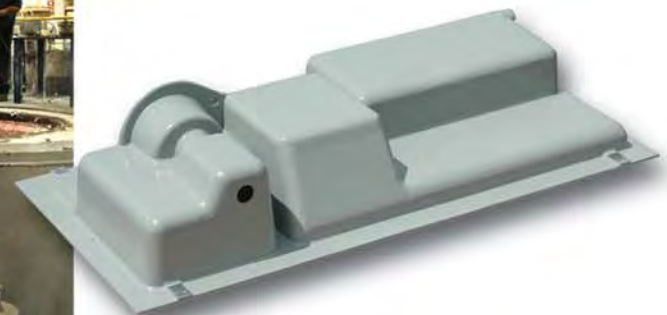
## Applications

– Premier specializes in the production of component parts from 1 to 100 pounds. Applications are as diverse as:

**encapsulation of heating elements, stainless and steel inserts for food cooking/warming equipment, construction products, furniture and pressure tight equipment.** We can produce high density and high strength castings for applications where medium volume, assembly-ready, fully machined aluminum castings are employed.



*State-of-the-art metal handling at low pressure casting stations.*



## Machining

- **CNC MACHINING & FINISHING**

Our fully integrated machining and assembly department utilizes state-of-the-art equipment and qualified technicians. Premier is equipped with both vertical and horizontal machining centers and CNC turning centers.

This in-house operation ensures casting and machining integrity with faster turn around.



## Tooling

- **ENGINEERING** – Collaboration is the key to success on every project. Our tool makers, foundry technicians and machinists work with our customer's team to design parts and integrate all processes to maximize productivity. CAD data can be submitted directly to our staff via the internet.

- **TOOL MAKING** – Complete in-house die design and building capability with the ability to analyze and integrate customer CAD files. Rapid prototyping and sand castings can be used to speed time to market and simulate permanent mold castings in development.

## Quality Assurance

- **ISO 9001 : 2000 CERTIFIED**

Our quality commitment comes first in the attitude and actions of management who encourage innovation, flexibility, diligence and integrity in the drive toward excellence.

The positive commitment and participation of each employee in quality assurance and self-improvement is essential to achieving our goals.

- **QUALITY VERIFICATION** – Premier uses coordinate measuring machines, SPC programs plus standard and specialized gage fixtures. Our facilities have equipment for complete spectrographic analysis.



## ***Our Facilities***



Premier Aluminum, based in Allenton and Racine, Wisconsin has produced high quality parts for over 20 years. We are a producer of machined and ready-to-assemble aluminum castings to a growing list of customers worldwide.

## ***Our Niche***



In the world of aluminum castings, low volume and prototypes are generally served by processes with low tooling costs like sand, while large production runs are satisfied by high pressure die casting, but with much greater tooling costs. To bridge the gap, permanent mold techniques provide a variety of cost effective alternatives.

Premier is fully positioned in this middle niche of aluminum casting alternatives.

## ***Customer Commitment***



All of us at Premier Aluminum are dedicated to customer satisfaction and the building of long term relationships. We work with customers to define their needs and to constantly improve products and services in a cost effective and timely manner.

Premier has a network of professional sales and technical support representatives throughout the country. Call today to have one of them visit you.

***A One Stop Shop for aluminum components***



3633 S. Memorial Drive • Racine, WI 53403-3823

Phone: 262-554-2100 • Fax: 262-554-2454

Toll free: 800-254-9261

**[www.premieraluminum.com](http://www.premieraluminum.com)**